

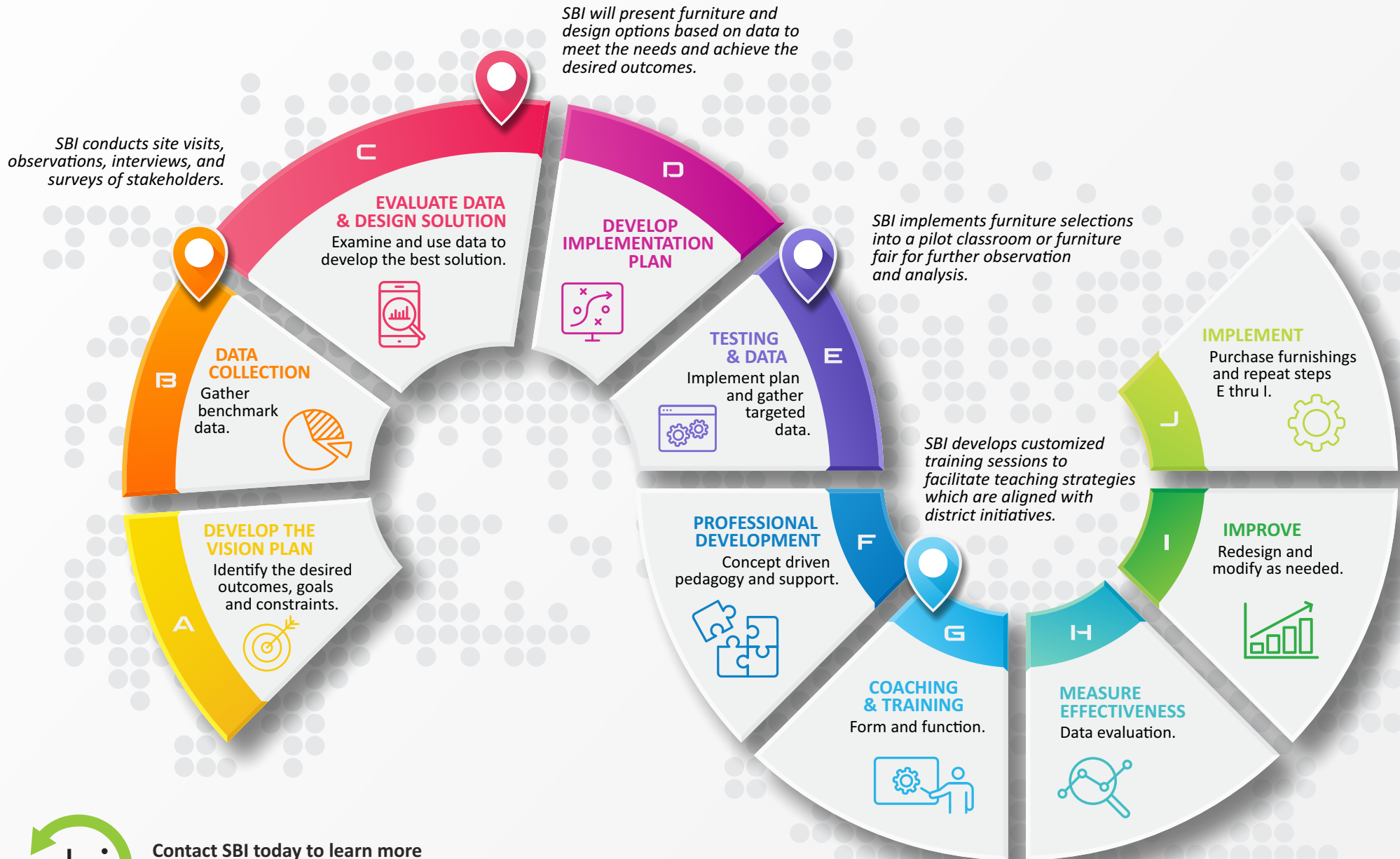


LEARNING ENVIRONMENT INTEGRATION PROGRAM

## The LEIP Process

Effective learning environment integration doesn't happen by accident. LEIP by SBI combines intentional strategic planning with data collection and professional development to maximize success, making designs more impactful.

At SBI we believe strongly that involvement of stakeholders in the process increases the potential for success. By designing engaging, flexible and functional learning environments we enhance instructional opportunities.



Contact SBI today to learn more about the LEIP Process  
[www.saxtonbradley.com/leip](http://www.saxtonbradley.com/leip) | 800.643.3512